

ABUSIVE AND DISCRIMINATIVE TOWARDS DISABILITY PEOPLE IN THE GREATEST SHOWMAN MOVIE DIRECTED BY MICHAEL GRACEY

Widya Melinia¹, Sayyid Khairunas²
Universitas Bina Sarana Informatika, Jakarta, Indonesia^{1,2}

sayyid.skh@bsi.ac.id

Received: 05/04/2023

Accepted: 20/04/2023

Publication: 28/04/2023

Abstract

The objective of this research is to analyze how the abusive and discriminatory behavior portrayed in the movie towards persons with disabilities, as well as the effects of abusive behavior and discrimination. This study used a descriptive-qualitative method, with the primary source being the original video of *The Greatest Showman* and secondary data coming from books, articles, and journals on the internet. Data collection was carried out by watching films and understanding the movie's dialogue several times, as well as making observations to deepen issues that are relevant to the main issues being studied, namely abusive behavior and discrimination against persons with disabilities. These results strengthen the analysis using Keashly's theory that two types of abusive behavior were found: physical violence and verbal violence. For discrimination using the theory from the U.S. The Equal Employment Opportunity Commission found several types of discrimination, namely disability discrimination, harassment discrimination, and race/skin color discrimination. The effects of harassment and discrimination are anxiety, violent behavior, psychological problems, marginalization, disempowerment, low self-esteem, and negative behavior.

Keywords— Abusive, Discrimination, Disability

Introduction

English is one of the most widely spoken languages in the world. Many countries use English as their second language. (Nasir, Samad, Jannah, & Sharudin, 2019). In the business world, English is important because almost all companies or job vacancies in Indonesia are looking for people who can speak or communicate in English, orally or in writing. People can easily learn English anywhere and anytime. It doesn't always have to come to school or study with the teacher in class, but students can learn English through listening to music, conversations, or reading books in English, such as newspapers, articles, comics, or novels and other types of literature.

The term "literature" is defined as the entirety of written expression, and literary works are oral or written works that have various superior characteristics such as originality, artistry, and expression. Or human thoughts that are mirrored in human existence, feelings, conduct, and attitudes result in literature. According to (Mulyati, 2019), "Literature is art used to describe written or spoken material or anything from creative writing to more technical or scientific works." It will imply that literature is an action of communicating inventive thoughts into a work that is then to be appreciated by people in general. Literature can be classified into four categories or genres, such as poetry, prose fiction, non-fiction, and drama. Generally, literary work has the aim of entertaining people in a particular form, (Solehah, Anita, & Rohbiah, 2022). A movie is a medium of entertainment that enacts a story by sound and sequence of images, giving the illusion of a continuous motion picture. It takes a story from a phenomenon that commonly happens in real life, which is related and close to society. (Rokhmah, Betaubun, &

Fenanlampir, 2020). Movies also have a significant impact on humans as viewers in everyday life and can give messages to the audience directly or indirectly. (Yastanti, Hasanah, & Nurmalia, 2022).

There are a lot of issues in this world, one of the social issues that still exist today is abuse and discrimination. According to Adler in (Rikawati, 2018) states “abusive behavior refer to hostile verbal and nonverbal behavior (excluding physical contact) directed by one or more person towards another that are aimed undermining the other to ensure compliance. Survival is needed to face such bullying and discrimination issues in a difficult place or the place they live in now. (Jimmi, Khairunas, & Yulianto, 2022)

Meanwhile, Discrimination based on Theodorson and Theodorson in (Khairunas & et al, 2018) that “the unequal treatment of individual or groups on the basis of some, usually categorical, attribute, such as race, ethnicity, gender, religion, sexual orientation, age, or social class membership.” This means that discrimination can be defined as mistreatment or unfair behavior by certain people or groups against people who are the targets of discrimination due to differences in personalities or social groups. Because of differences, a person will take unfair action or treat certain people indiscriminately. (Minderop, 2010)

The main thing that makes the writer interested in researching “The Greatest Showman” movie is different from other movies in that it tells and discusses important issues, namely abusive and discriminative.

Based on the title “Abusive and Discriminative Towards Disability People in The Greatest Showman Movie Directed Michael Gracey”, there are some research questions to be analyzed, they are:

1. Recognize and comprehend the abusive behavior depicted in the movie “The Greatest Showman.”
2. To learn and comprehend discriminative in the movie “The Greatest Showman.”
3. To describe the effects of abusive behavior and discriminative towards people with disabilities in the movie “The Greatest Showman.”

Literature Review

Disability people need more attention . In the last two decades, the concept of health care for people with disabilities has shifted from disease and disability prevention to prevention of secondary conditions. People with disabilities are at risk for “secondary conditions,” which are preventable medical, emotional, or social problems resulting directly or indirectly from an initial disabling condition. (Liou, Pi-sunyer, & Laferre, 2005).

Verbal bullying is often considered as a permanent expression in words of the some through or feeling idea about life and the world towards other people (Anggraini, Yastanti, & Khairani, 2020). In *The Greatest Showman* movie there are verbal violent scenes such as (1) Taunting (2) A feeling of resentment (3) Hostility (4) Contempt. While the effects of bullying against victims are (1) Decreasing confidence (2) Feeling intimidate (3) Feeling isolated (4) Prolonged depression (5) Feeling dissimilar (6) Feeling stress. (Ardhi Sasongko, Henny Suharyati, 2019).

Harrasment, abusive, and discriminative behaviour have plagued the Internet. Some researchers try to find an approach to detect and overcome these situations. (Chandrasekharan, Samory, Srinivasan, & Gilbert, 2017) proposed in their research a new approach called Bag of Communities (BoC)—a technique that leverages large-scale, preexisting data from other Internet communities. The BoC approach may allow communities to deal with a range of common problems, like abusive behavior, faster and with fewer engineering resources.

Other researchers analyze that bullying may happen because of differences in social status. Bullying occurs because of physical differences. (Bustam, n.d.).

Leadership is also shown in the movie as one of the aspect which occurs. In *The Greatest Showman* movie, the leadership of Phineas Taylor Barnum as the main character is represented by portraying Barnum's character as self-leadership and leader in the circus. There are several scenes that the writer considers representative of Barnum's leadership shown through the dialogues, images, behavior, and social. (Mardewi, Sofyan, Indriyani, 2022)

Language variations found in the film *The Greatest Showman* are randomly selected based on the social context and their use. the use of variations in language to communicate often uses a variety of businesses, identical to those who have a level high education. (Ardhi Sasongko, Henny Suharyati, 2019).

Research Method

This Research uses the descriptive qualitative method. According to (Brinkmann, Svend., Jacobsen, M.H., Krstiansen, 2014) explain that “Qualitative methods can be applied across disciplines to investigate a wide range of issues. This research approach is frequently used in the social and behavioral sciences to explore, describe, or explain social phenomena; dismantle the meanings ascribed to activities, situations, and events; or build a deep understanding of some aspects of social life, making connections between individuals or groups.” It means Qualitative methods are utilized to comprehend various aspects of social life and to connect individuals or groups. The object of this research is the movie "The Greatest Showman." The type of data used comes from primary data, namely the original video "The Greatest Showman", and secondary data from literature that supports the data such as journals or books. Then the data collection technique consists of observation and online sources such as reference journals to complete the problem to be solved. Then the data analysis technique is analyzed by taking pieces of the scenes contained in the movie "The Greatest Showman" based on existing theory and will display pictures of scenes, dialogues, and situations that occur in the discussion. To be more specific, by analyzing the abuse and discrimination towards disabled people in “The Greatest Showman Movie” and also the effect of abuse and discrimination in that movie.

Results and Discussion

To find the answer from the research question, the writer analyzing abusive and discrimination towards disability people and also the effects of abusive and discrimination. The findings of the analysis are taken from the analysis process in the dialogues and scenes that occur in *The Greatest Showman* movie.

1. Abusive behavior portrayed towards people with disabilities

In analyzing abusive behavior in *The Greatest Showman* movie, the writer uses the theory of (Keashly, 1994). The writer found that there were 2 types of abusive behavior that were most commonly found in *The Greatest Showman* movie, namely physical abuse and verbal abuse.

1. Physical Abuse

Scene 1:



Figure III. 1Barnum's circus gets beaten up by residents
(Source: *The Greatest Showman*, 2017)

Barnum : **“Hey! Hey! That’s enough.
Walter! Inside, all of you. Right
now.”**

Man : “Look at ‘em run! We don’t want your kind! Get outta here! That’s right, you freaks! Your master’s calling!”

Barnum : “That’s quite enough, sir.”

Man : “Nothing more to look at! At your service.”

In this scene, Barnum is reading a newspaper about news made by critics about his circus that made people around him hated him. Then there is a commotion in front of the circus, then Barnum comes out and sees members of his circus being beaten and kicked by residents because circus members try to refuse to left and the residents still tried to evict the residents but the residents instead attacked the circus members because the people around them considered them strange people because of obvious physical differences such as a bearded woman, the shortest man, the tallest man and others. From this, it is clear that in the scene there is physical violence perpetrated by citizens against persons with disabilities, which is carried out by one or more people against other people with the aim of weakening other parties with the aim of expelling them. Thus, the perpetrators of discrimination feel that they are the most normal and look perfect by looking down on others.

2. Verbal abusive

Scene 2:

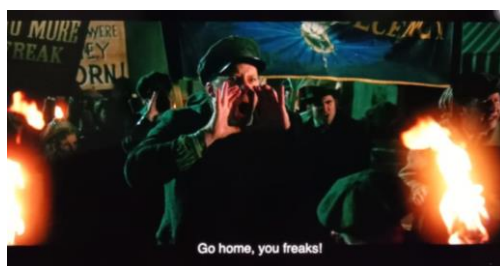


Figure III. 2. People protest Barnum's circus
(Source: The Greatest Showman, 2017)

Barnum : “There always is, isn’t it there” Nothing draws a crowd quite like a crowd.

People : “We don’t want you in our city! Go home, **you freaks! Freaks!**”

Barnum : “**Shame on the city, the protest cement Mr. Barnum’s reputation as a purveyor of the offensive and indecent.**”

The scene occurred when the public attacked Barnum's circus by trying to expel Barnum and his circus members, which they thought was disgusting and strange after the appearance of hoax news made by a journalist, and the public showed angry emotions while holding banners with insulting writing such as "Shame on the city," "why were they born?" and "protecting our children." These sentences include verbal abuse because it is clear that verbal abuse is mental violence that is carried out using very hurtful, threatening, or insulting words, both verbally and in writing, addressed to Barnum's attraction stars, which they consider humiliating, weird, and disgusting because there are striking physical differences that make people think that the circus's members will have a bad impact on their lives.

Scene 3:



Figure III. 3. Barnum's Circus meets the Queen of England
(Source: The Greatest Showman, 2017)

Carlyle : “Your Majesty. May I present Mr. Barnum.”

Queen : “The honor is mine, Mr. Barnum. And I’ve heard all about your little colonel from my friends in America.”

Charles : “General, ma’am.”

Queen : “**You’re even smaller than I imagined.**”

Charles : “Well, you’re not exactly reaching the top shelf yourself, sweetheart.”

From that scene, Barnum's circus was invited to England and had the opportunity to meet the English queen, Victoria. When they got there, the royal people saw Barnum and the stars of his attractions with shocked expressions and thought they were strange. The Queen of England said that Barnum brought his small army, and which made Charles very uncomfortable and feel disrespected by the words of the Queen, who **indirectly make of fun his small body**. Charles also replied to the Queen's words in the same way, which surprised the Queen quite a bit. From the queen's words, it can be concluded that it is an example of verbal abuse, which can indirectly ridicule someone and make others feel uncomfortable and angry with their words.

2. Discrimination portrayed towards people with disabilities

In analyzing discrimination in The Greatest Showman movie, the writer uses (U.S. Equal Employment Opportunity Commission, 2017) theory. The writer found that there was discrimination of disability in this movie.

1. Disability Discrimination

Scene 4



Figure III. 4. Barnum went to Charles' house
(Source: The Greatest Showman, 2017)

Barnum : “P.T. Barnum, at your service. I am putting together a show and I need a star.”

Charles : “**You want people to laugh at me.**”

Barnum : “Well, they’re laughing anyway, kid, so might as well get paid.”

In that scene above, **Charles Stratton is a character who has a stunted body size and has a height of about 92 cm.** Then Barnum looked for Charles, whom he met at the bank to invite him to become a circus star attraction, but Charles refused and said and thought that everyone would make fun of him because of his small body, in this case it can be concluded that there is discrimination in disabilities that occurs because of a sense of insecurity Charles appeared because he was often made a laughing stock because of differences in his body and was considered strange by the people around him.

2. Harassment Discrimination

Scene 5:



Figure III. 5. People gasp at the circus members
(Source: The Greatest Showman, 2017)

In the picture above, there is no dialog and it is clear that there is discriminatory behavior carried out by people, namely harassment discrimination, which, according to (U.S. Equal Employment Opportunity Commission, 2017), Harassment is discriminatory behavior directed at someone because of race, skin color, religion, or personal appearance and in that scene where for the first time the circus attraction stars appear in front of many people, and it is known that these circus stars are unique people and different from ordinary people because they have uniquely diverse bodies such as the tallest person, the shortest person and other physical appearances, therefore **people are very shocked, scared and gasp by what they see.**

3. Race/Color Discrimination

Scene 6:

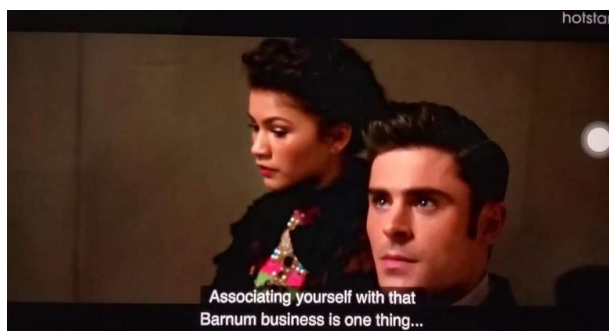


Figure III. 6. Philip's parents sneered at Anne
(Source: The Greatest Showman, 2017)

Philip's father: "Philip, is that you?"
Philip : "Mother, Father. This is Anne Wheeler."
Philip's father: "Philip, have you no shame, association yourself with that Barnum business is one thing but parading around with the help?"
Anne : (Anne run away)

Anne Wheeler and her brother were born black. When joining Barnum's Circus, Philip's parents said that people would not like it if they went on stage, and this proved that their race was hated at that time, and **racial discrimination against black people was very clear in what Philip's parents did to Anne because Anne is black**. Discrimination against black people from Africa who were made into slave labor and were the only ethnicity who came to America without voluntarily and then they were brought by force from Africa to be sold and used as slaves, because of that the word "the help" used by Philip's parents was very offensive because black people are interpreted as servants, slaves or manual laborers and because of that Philip's father feels very embarrassed when his child associates with black people who are often considered contemptible, so despicable that it is even likened to "being black is a sin".

3.4. The effects of abusive and discriminatory behavior on people with disabilities.

The writer uses the theory in Introduction to identify the effects of Abusive behavior. Abusive Behavior has been observed to have an impact on people's physical and psychological well-being. According to (Kapur, 2020) there are the primary consequences of physical abuse.

1. Anxiety

Scene 7:

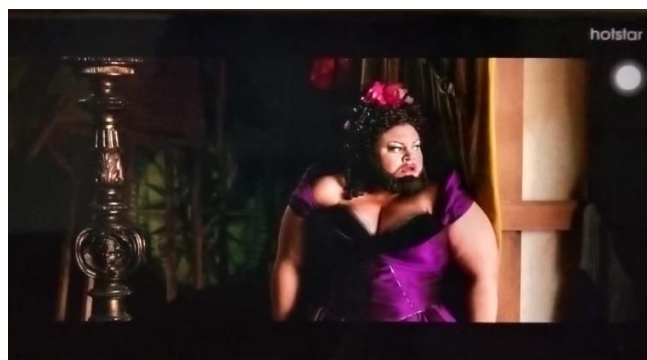


Figure III. 7. Lettie looks terrified
(Source: The Greatest Showman, 2017)

Barnum : "Lettie! Lettie! They are waiting!"
Lettie : "For what?"
Barnum : "For you."
Lettie : "No."
Barnum : "They don't know it yet but they are gonna love you. Trust me."

In the scene, it happened when Barnum and the people with physical disabilities who joined Barnum's circus for the first time appeared in front of many people, and it was seen that Lettie, who played an important role in the circus by singing, **looked so worried, she was very scared, and she had panic and shortness of breath because it was the first time, she showed herself in front of many people because her physique was different from other people's.**

Lettie looked so panicked because she thought people would hate her presence, but it looked like new people were trying to talk to and convince her so that she is calm, can show her best performance, and people are really waiting for her performance. From what Lettie feels, this includes the effects of abuse and discrimination that are often experienced by her, so that she feels herself unable to do things that have not been done before, which is included in anxiety, where someone who suffers from generalized anxiety disorder can feel anxious or worry excessively about various things.

1. Marginalization

Scene 10:



Figure III. 10. Barnum meets Charles' parents
(Source: The Greatest Showman, 2017)

Barnum: "You must be Gertrude Stratton. I'm looking for your son."

Charles's mother : "I don't have a son."

Barnum: **The hospital record says you do. Charles, right? Age 22?**

The scene occurred when Barnum paid a visit to one of the people he met at the hospital, namely a man named Charles who was only 99 cm tall and different from other humans because he had physical limitations. However, when Barnum arrived at his house, a woman opened the door, and it was Charles' mother. **When Barnum wanted to meet Charles, Charles' mother refused and said she did not have a son and covered up the fact that she had a son who had physical limitations.** From the attitude shown, it was an effect of discrimination and enter into the type of marginalization discrimination, namely Marginalization is an act of alienating, marginalizing, or weakening the power of minority groups because of the limitations possessed by Charles, Charles's mother tried to alienate her child and because Charles' parents were often discriminated against by others and looked down upon, resulting in their distrust of other people, even as Charles lied to his parents and thought he had no children because Charles' parents were ashamed and felt Charles was a disgrace to the family and not considered to be part of the family.

2. Disempowerment

Scene 11:



Figure III. 11. Anne was insulted by Philip's parents
(Source: The Greatest Showman, 2017)

Philip's father : "Philip, is that you?"
Philip : "Mother, Father. This is Anne Wheeler."
Philip's father: "**Philip, have you no shame, associating yourself with that Barnum business is one thing but parading around with the help?**"
Anne : (Anne run away)

From the scene above, Philip and Anne went to a theater to meet Philip's parents. **They looked at Anne sarcastically because Philip's parents did not like Philip being near people who had thin bodies and black skin because black skin was synonymous with maids, and Philip's parents said, "Aren't you embarrassed to walk with this maid?"** Immediately, Anne felt very sad and disappointed with what was said about her, so she returned and left that place. This is what happens when discrimination occurs and results in disempowerment, namely when a person who is discriminated against by someone in power has a powerless effect on victims. For some victims, they may fight back, but she feels differently because she is increasingly powerless and feels worthless. In this case, powerlessness makes a person unable to refuse other people's treatment when parents have more power, and because they cannot stand their treatment, a person who experiences disempowerment also feels confused and stressed because she is getting treatment she shouldn't get.

3. Low self-esteem

Scene 12:

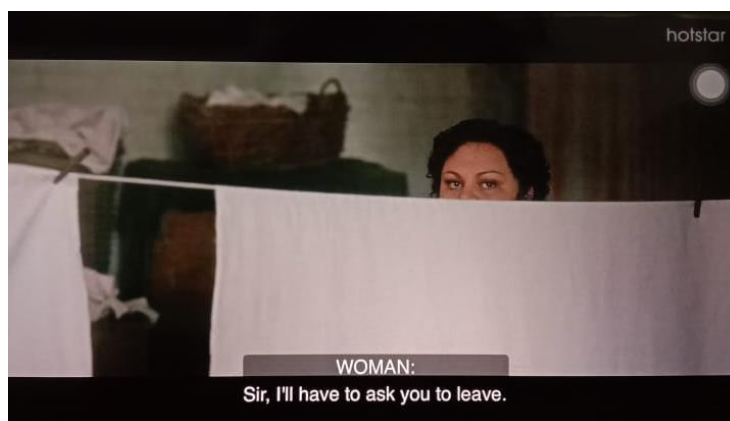


Figure III. 12. Lettie tried to shoo Barnum away
(Source: The Greatest Showman, 2017)

Barnum : “Hello”
Woman: “**Sir, you shouldn’t be he here.**”
Barnum: “I’m sorry, who’s doing that singing? It’s you, Isn’t it?”
Woman: “**Sir, I’ll have to ask you to leave.**”
Barnum: “You are so talented, blessed, extraordinary, unique. I would even say beautiful.”
Woman: (Woman laughing)
Lettie : “Sir, please leave me alone.”
Barnum: “They don’t understand, but they will.”

In that scene, when Barnum found Lettie in the laundry, she was a woman with a beard, and Lettie looked very uneasy when Barnum approached her. She was singing with her melodious voice, and Barnum asked her to be one of the star attractions. **He then praised Lettie for her voice and uniqueness, but the workers there laughed at her, so Lettie told Barnum to leave because she was not confident about herself.** From the discrimination that Lettie experienced at her workplace, it had an effect on her, so she felt it was inappropriate and chose a closed place so that it couldn't be seen by many people. By proving she's hiding, she really doesn't trust herself because she becomes the target of ridicule by others.

4. Negative behavior

Scene 13:



Figure III. 13. Charles talks to Queen Victoria
(Source: The Greatest Showman, 2017)

Carlyle : “Your Majesty. May I present Mr. Barnum.”
Queen : “The honor is mine, Mr. Barnum. And I’ve heard all about your little colonel from my friends in America.”
Charles : “General, ma’am.”
Queen : “**You’re even smaller than I imagined.**”
Charles : “**Well, you’re not exactly reaching the top shelf yourself, sweetheart.**”

In this scene, while Barnum and his circus members attend an invitation from the queen of England, **the queen has the right thing to say to Barnum by saying, "Your little troop," which offends one of the circus members, namely Charles, for being only 99 cm tall.** Reflexively, Charles refused and refuted the queen's words that he was a soldier and not a small troop because of the act of discrimination committed by the queen, which made him retaliate and say more cruel things to the queen. This includes the effects of discrimination that make victims behave negatively, and the cause of negative behavior is the mental health of the victims of discrimination such as aggression or crime, which can occur because a person does not accept discrimination. Therefore, this causes the need for retaliation against those who discriminate against them, so that victims who are discriminated against verbally will fight back by taking action, but any action to retaliate for discrimination must be rethought, whether it is good or makes things worse.

Conclusion

The writer examines the abusive behavior and discrimination that is reflected in people with disabilities, and the effects of abuse and discrimination. Therefore, to find data on abusive behavior, the writer used Keashly's theory. The writer found that there were 2 types of abusive behavior most commonly found in *The Greatest Showman* movie, namely physical abuse and verbal abuse.

For the form of discrimination in "The Greatest Showman movie", the writer uses U.S. Equal Employment Opportunity Commission theory. The writer found that there were several types of discrimination, namely disability discrimination, harassment discrimination, and race/skin color discrimination. This movie also shows the effect of abusive and discrimination, from the previous chapter the writer found several data which show effect of abusive such as anxiety, violent behavior and psychological problem. Meanwhile, the effects of discrimination are marginalization, disempowerment, low self-esteem, and negative behaviors. To sum up, the act of abusive and discriminative depicted in the movie towards disability people are also happening in our daily lives and it may affect a serious damaged to them.

References

- Anggraini, A., Yastanti, U., & Khairani, A. (2020). Verbal Bullying In The Greatest Showman Movie Directed By Michael Gracey. *Jurnal Ilmiah Universitas Batanghari Jambi*, 20(3), 885. <https://doi.org/10.33087/jiubj.v20i3.1072>
- Ardhi Sasongko, Henny Suharyati, S. R. (2019). THE COMPONENTS OF SPEECH EVENTS AND THE USAGE OF LANGUAGE VARIATIONS ON THE CENTRAL CHARACTER IN THE FILM THE GREATEST SHOWMAN. *Journal Albion*, 1(2), 2013–2015.
- Brinkmann, Svend., Jacobsen, M.H., Krstiansen, S. (2014). *The Oxford Handbook of Qualitative Research*. (P. Leavy, Ed.). New York: Oxford University Press.
- Bustam, M. R. (n.d.). Turahyang Diakibatkan Oleh Voyeurism (Pendekatan Psikoanalisis), 257–264.
- Chandrasekharan, E., Samory, M., Srinivasan, A., & Gilbert, E. (2017). The Bag of Communities : Identifying Abusive Behavior Online with Preexisting Internet Data. *Proceedings of the 2017 CHI Conference on Human Factors in Computing Systems*, 3175–3187. <https://doi.org/10.1145/3025453.3026018>
- Jimmi, Khairunas, S., & Yulianto, K. (2022). Analysis of Survival Aspect Faced by The Main Character in The Revenant's Movie. *JL3T (Journal of Linguistics, Literature and Language Teaching)*, 8(1), 18–27. <https://doi.org/10.32505/jl3t.v8i1.3861>
- Khairunas, S., & et al. (2018). definition of Main Character. Frequency of appearance of characters. *Wanastra*, 10(2), 35–46. Retrieved from <http://ejournal.bsi.ac.id/ejournal/index.php/wanastra>
- Liou, T., Pi-sunyer, F. X., & Laferre, B. (2005). Physical Disability and Obesity. *Nutrition Reviews*, 63(10), 321–331. <https://doi.org/10.1301/nr.2005.oct.321>
- Mardewi Tati, Endah Sofyan, Furi Indriyani, N. D. (2022). The Leadership of Phineas Taylor Barnum in the Greatest Showman Movie. *INTERACTION: Jurnal Pendidikan Bahasa*, 9(2), 351–362.
- Minderop, A. (2010). Psikologi Sastra.
- Mulyati, S. (2019). The Analysis of Five William Blake'S Poems. *Wanastra: Jurnal Bahasa Dan Sastra*, 11(2), 113–120.
- Nasir, C., Samad, I. A., Jannah, T. M., & Sharudin, E. S. (2019). An Analysis of Moral Values in the Movie "Coco." *Proceedings of the 2nd English Education International Conference (EEIC) in Conjunction with the 9th Annual International Conference (AIC)*, (2002), 20–26.
- Rikawati. (2018). THE SURVIVAL STRATEGIES OF THE MAIN CHARACTER IN THE

FILM AMERICAN SNIPER BY CLINT EASTWOOD, 15–19.

- Rokhmah, D. E. L., Betaubun, M., & Fenanlampir, C. A. (2020). Am I Allowed to Laugh? Students' Perception Towards the Use of Humor in English Class, *473(Icss)*, 397–401. <https://doi.org/10.2991/assehr.k.201014.085>
- Solehah, M., Anita, A., & Rohbiah, T. S. (2022). An Analysis of Presupposition on The Main Characters of Frozen Movie Script. *Wanastra : Jurnal Bahasa Dan Sastra*, *14*(1), 72–76. <https://doi.org/10.31294/wanastra.v14i1.10990>
- Tjitra, C. A., Budiana, D., & Wijayanti, C. A. (2022). Representasi Bullying dalam Film The Greatest Showman. *Jurnal E-Komunikas Program Studi Ilmu Komunikasi Universitas Kristen Petra, Surabaya*, *10*(1), 1–12. Retrieved from <https://publication.petra.ac.id/index.php/ilmu-komunikasi/article/view/12202>
- Yastanti, U., Hasanah, F., & Nurmalia, L. (2022). Wanastra : Jurnal Bahasa dan Sastra Love in Aladdin Movie Directed by Guy Ritchie. *Wanastra : Jurnal Bahasa Dan Sastra*, *14*(1), 62–71. Retrieved from <https://doi.org/10.31294/w.v12i1http://ejournal.bsi.ac.id/ejurnal/index.php/wanastra/62>